

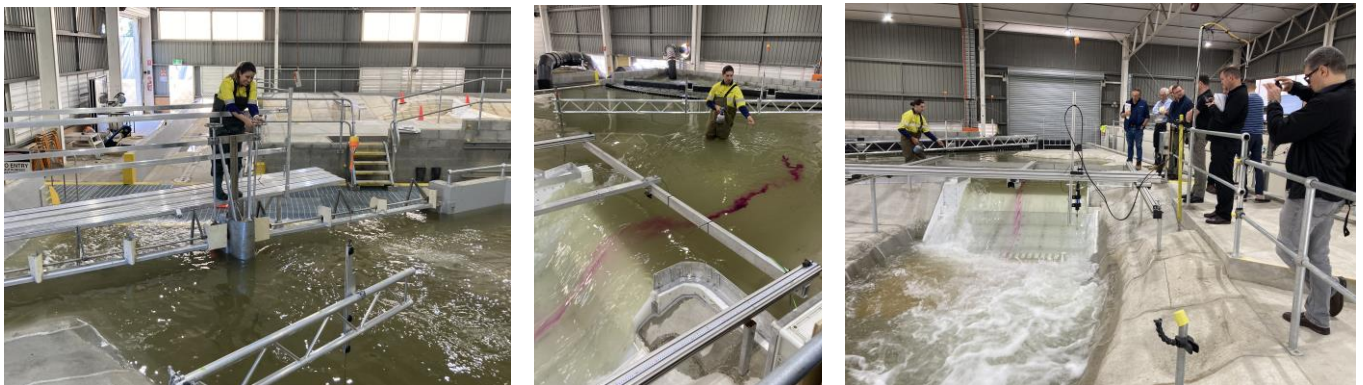


Site Tour - Sunwater's Rocklea Hydraulics Laboratory

Sunwater's Rocklea Hydraulics Laboratory is the largest of its kind in the southern hemisphere. Having been operational since 1977, the facility enables detailed physical modelling of hydraulic structures, the testing of scale models before their projects commence full-scale construction.

Currently the laboratory instrumentation is capable of measuring water levels, velocities, and static and transient pressures. Further, our laboratory facilities provide for moulding, machining and fabrication in timber, acrylic, metals and other materials for instrumentation and hydraulic models.

To ensure Sunwater can assist optimising delivery of the next generation of water infrastructure projects, the laboratory is currently undergoing a significant upgrade.



Tour Details

Date: Wednesday 8 November 2023

Time: 1:45pm – 5:00pm

Collection Point: Hilton Brisbane, 190 Elizabeth ST, Brisbane City QLD, 4000

Schedule

Delegates to meet at 1.45pm at Hilton Brisbane, the coach will depart Hilton at 2.00pm sharp. Delegates will tour the Rocklea Lab and return to Hilton Brisbane by 5.00pm.

Inclusions

Delegates to bring their own water bottle. Return transport from Hilton Brisbane is provided via Coach.

PPE Requirements

Please wear long pants, long sleeves closed-toed shoes. A hat is also recommended.

Cost

AWA Member \$30 | Non-member \$45